



children's
trusttm



2020 Annual Report

Our Mission

The Children's Trust is on a mission to stop child abuse in Massachusetts.

We give parents the tools and guidance to build self-confidence and gain lifelong skills that ensure children grow up safe and healthy.



Dear Friends,

The 20,000 families that rely on the Children's Trust needed our support more than ever this year. From the launch of our first SAFE (Stop Abuse for Every) Child Community to over 7,000 virtual home visits (and counting), virtual playgroups, and online trainings for family support professionals, these essential services have continued to support families.

The risk factors for child abuse and neglect increased exponentially with families experiencing stress at unimaginable levels and isolation at an all time high. We could not be prouder of the work we and our amazing partners have done to support parents and strengthen families during these challenging times. Early in the pandemic, one Healthy Families program participant reached out to thank us for sticking with her even when everyone else "packed up and left."

This year more than ever, we are grateful to our partners for helping us continue to support families who need it most. Thank you to all our supporters and friends for your dedication to stopping child abuse.

Thank you,



A handwritten signature in black ink that reads "Suzin Bartley".

Suzin Bartley, LICSW

Executive Director

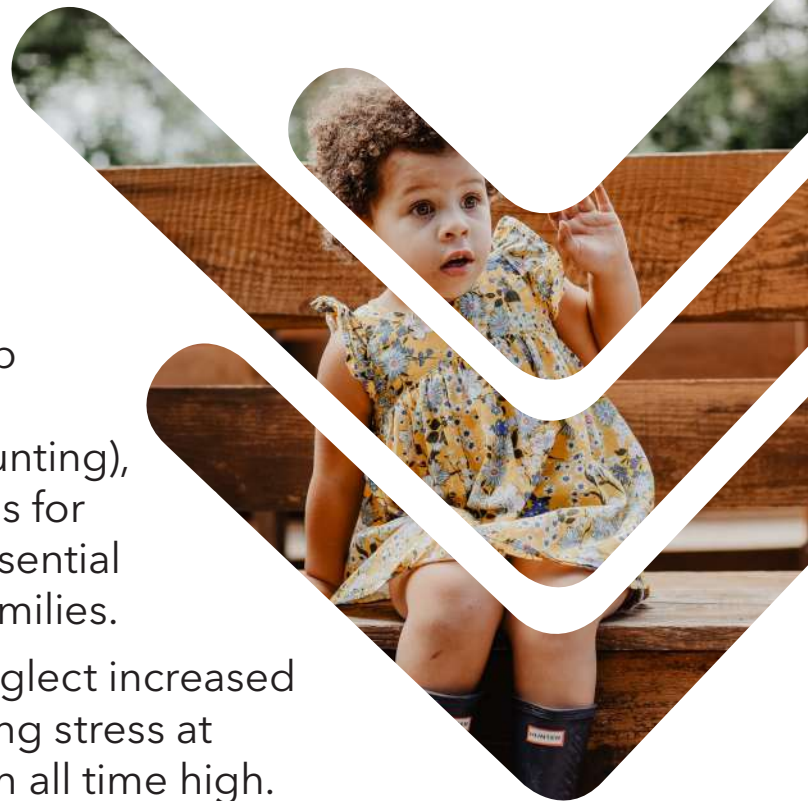


A handwritten signature in black ink that reads "George Atanasov".

George Atanasov

Chair of the Board of Directors

Director, State Gov't Affairs Johnson & Johnson



Did You Know?



141,645 cases
of child abuse and neglect were
reported in every city and town in
Massachusetts last year.

Our programs partner with parents to
provide **resources and guidance** to help
them build the skills and confidence
they need to make sure kids have safe
and healthy childhoods.

// Having Healthy Families in my life for almost three years now has been a blessing. But having them during the pandemic has been an indescribable service! //

- Children's Trust program participant



Did You Know?



Participating in **Healthy Families Massachusetts**, our statewide in-home coaching program for first-time parents under 21, led to a **36%** decrease in **parenting stress**, a risk factor for child abuse and neglect.

A transition to a virtual world
in mid-March meant parents needed
support now more than ever.



7,240* Virtual Home Visits & Counting

Starting in mid-March, home visitors quickly adjusted to virtual visits. Young parents in the program reported that their home visitors were, in many cases, the only people who continued to reach out with help and guidance during the pandemic.

**From mid-March to July 31, 2020*

Did You Know?



Each year, approximately
1,300 children nationwide
are seriously injured because an adult
caregiver vigorously shook them.

We offer new parents access to
All Babies Cry, an evidence-based,
multi-media intervention program
providing practical demonstrations of
infant soothing and clear strategies for
managing normal stress in parenting.

300% increase in use of parenting resource, All Babies Cry



In response to growing concerns of unreported child abuse and neglect, and increased parental stress, we offered all parents free, full access to All Babies Cry, a resource with video topics including: what's normal about crying, comforting your baby, self-care tips for parents, and more.

Did You Know?

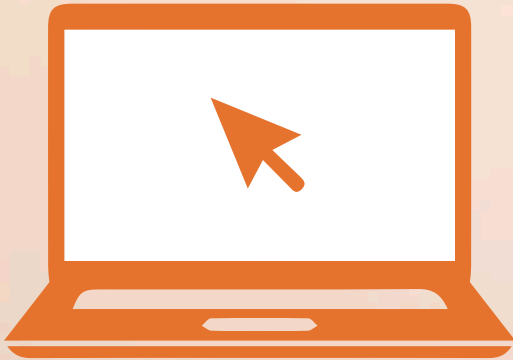


86% of parents reported that they are often uncertain about the right thing to do in raising their children.

Parenting is one tough job. We get it.

Onetoughjob.org connects parents in Massachusetts and beyond with the latest and greatest **parenting information, ideas, and on-the-ground resources.**

387% increase on our website onetoughjob.org in MA



The comprehensive parenting website provides parents access to information about how to manage the stress and isolation that resulted from the pandemic. Topics included "Co-Parenting During COVID-19" and "Staying Sane (with Kids!) During COVID-19".

Did You Know?



An effective way to ensure high-quality family support programs is to **educate and empower individuals working daily to improve the lives of families and children.**

Did You Know?



88% of adults believe that it is harder to be a parent than it used to be.

Our **Family Centers** are community hubs where parents can tap into **community resources**, learn new parenting skills, get individualized family support, meet other families, and participate in **activities and programs** that support them in their caregiving role.

Family Centers & Parenting Education and Support Programs



Our Family Centers and Parenting Education and Support Programs quickly adjusted to move playgroups and parenting support groups online, giving parents the opportunity to connect with other parents from home while also giving their kids opportunities for stimulation and social engagement.

**// Thanks for sticking
with me when
everyone else closed up
and said 'see ya!' //**

- Children's Trust program participant



Did You Know?



85% of youth

who exhibit behavioral disorders are from a fatherless home.

Our **Fatherhood Initiative** works to advance activities and trainings that support fathers, their families, and the professionals who work with them.

We are raising greater awareness of the important role that fathers play in the well-being of their children and families.

A New Initiative to Stop Child Abuse

In March, the Children's Trust and Cape Cod Children's Place launched a first-of-its-kind initiative to stop child abuse and neglect.

Together, with nearly 60 years of combined experience, we began the first Children's Trust SAFE (Stop Abuse for Every) Child Community in Massachusetts, serving Yarmouth, Dennis, Chatham, Harwich, Brewster, Orleans, Eastham, Wellfleet, Truro, and Provincetown.



Research shows that child abuse and neglect can be prevented by enhancing access to programs that build resilient, stable families. A SAFE Child Community integrates our evidence-based strategies with the local expertise of community partners and eliminates barriers families face when seeking support.

SAFE Child Communities are built on a foundation of programs proven to stop child abuse and neglect.



A Night to Stop Child Abuse

On September 26, 2019, months before the pandemic began, Program Participant Regina Serverius shared her story with the nearly 400 guests gathered for our annual Children's Trust Gala.

Regina recalled her journey from living in 10 different foster homes as a child to becoming a successful young mother of two wonderful boys.

// Healthy Families matched me with my home visitor, Lisa. She was always there for me and answered all my questions. She met with me every week, no matter what. I learned that I could count on her, like I couldn't count on most others. //

- Regina Serverius, Children's Trust program participant



Left: Regina Serverius offers remarks about her experience with Healthy Families.

Above: Serverius joins Tyler Stanton, who graduated from the Hampshire County House of Corrections Nurturing Father's program, to talk about how the Children's Trust has positively impacted their parenting.

Guests also heard from a formerly incarcerated father who learned from Nurturing Fathers how to be the loving dad he is today and from a growing family who turned to their Family Center to support them through the adoption of their two children.

Attendees got to experience through the eyes of our families the impact of our programs across the Commonwealth.



The event saw a full house of supporters dedicated to stopping child abuse.



We are grateful for the support from the Boston Bruins who joined us for the evening.

Thank you to our generous sponsors!

Presenting Sponsor



Platinum Sponsor

Robert Alkon/Alkon & Levine

Gold Sponsors

Anne Bailey Berman & Roger Berman

Dr. Kerry Maguire

Eileen & Jack Connors

Eversource

Gilbane

New England Development

Rick Bendetson

Silver Sponsors

AIS

Anne & Paul Marcus Family Foundation

Anne Peretz

Boston Celtics Shamrock Foundation

Delta Dental

Direct iT, Inc.

Home Market Foods/Cooked Perfect

J & M Brown Co Inc.

John Brennan/Hunt Street Fund

Massachusetts Port Authority

The Mentor Network

PURE Insurance

Robinson + Cole

S & F Concrete Contractors, Inc.

The City of Boston Credit Union

Walter Furman

Table Sponsors

Arbella Insurance Foundation

Boston Children's Hospital

Colchester Partners LLC

Game Creek Video

Gryphon Networks

The HYM Investment Group, LLC

Pentera, Inc.

Rockland Charitable Trust

Sugrue & Associates, Inc.

Waldron H. Rand & Co., P.C.

27th A View from All Sides

On Monday, November 4, 2019, we held the 27th annual A View from All Sides family support training conference.

We were honored to have President and CEO of Olive Branch Clinical Consulting Services, Alice Farrell, JD, MSW deliver the keynote address. She spoke about the intersection of equity, disparities and the multi-dimensions of youth, family, and community engagement.

Nearly 500 family support professionals joined us and participated in 40 engaging and informative workshops, with topics ranging from engaging fathers to understanding and addressing trauma to supporting early childhood development through music.





During the luncheon, we honored:

- Cindy Horgan, *Executive Director of Cape Cod Children's Place, with the Frances Litman Leadership Award, Pioneer of Parenting Education and Family Support*
- Meghan McGuirk, *Director of Prevention at MSPCC, with the Emerging Leader Award*
- Parents Yohanna Reus and Fabiano Frasson *with the Family Recognition Award*
- Two Ten Footwear Foundation *with the Partnership Award*



Our Financials

The Children's Trust - Public

Revenue and Other Support:

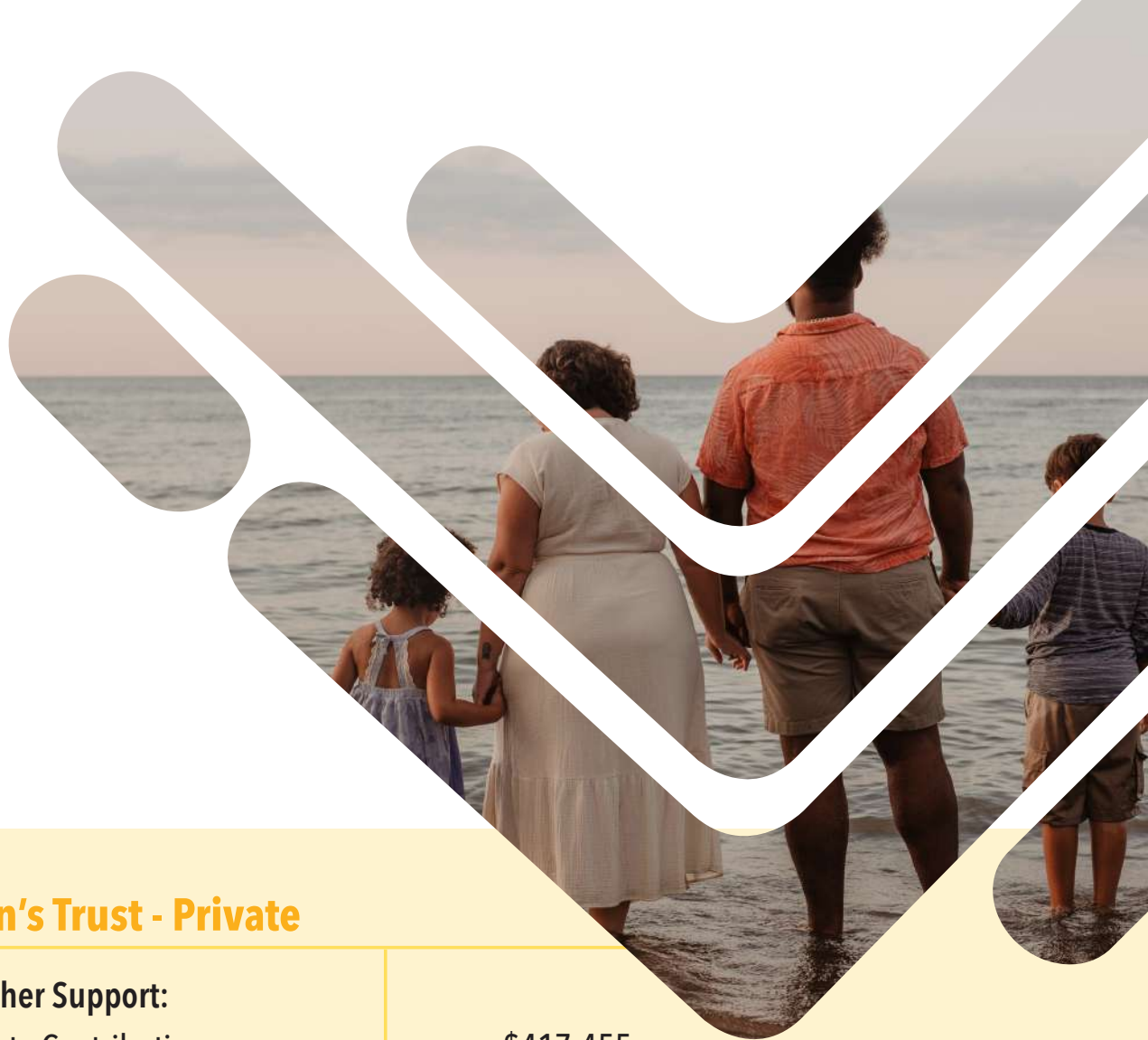
Healthy Families (State)	\$15,438,152
The Children's Trust Account (State)	\$1,713,721
Inter-Agency Service Agreements	\$1,462,716
Federal Grant (Multi-Year)	\$523,723

Total Revenue	\$19,138,312
----------------------	---------------------

Disbursements:

Program Services	\$17,121,579
Management & General Infrastructure	\$763,716
Non-Program Personnel	\$625,023

Total Disbursements	\$18,522,485
----------------------------	---------------------



The Children's Trust - Private

Revenue and Other Support:

Corporate & Private Contributions	\$417,455
Special Events (Net of Direct Expenses)	\$311,163
Conferences & Others	\$77,909
In-Kind Contributions	\$69,656
Investment (Endowment) & Interest Income	\$47,268

Total Revenue

\$923,451

Disbursements:

Program Services	\$402,142
Management & General Infrastructure	\$103,771
Non-Program Personnel	\$147,003

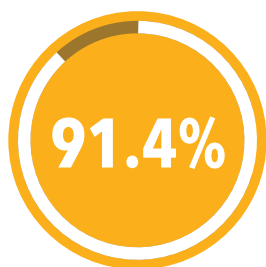
Total Disbursements

\$652,916

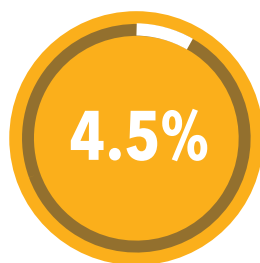
“Healthy Families has been a lifeline that I have used since my son was a couple months old. They provide me with the support and motivation I need to be a great mother and college student, especially during this time of uncertainty and stress.”

- Children's Trust program participant

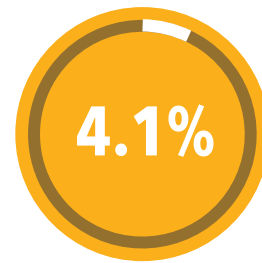




Program Services



**Management & General
Infrastructure**



Non-Program Personnel

Total Revenue by Source

77.0%	Healthy Families (State)	\$15,438,152
8.5%	The Children's Trust (State)	\$1,713,721
7.3%	Inter-Agency Service Agreements	\$1,462,716
4.6%	The Children's Trust (Private)	\$923,451
2.6%	Federal Grant (Multi-Year)	\$523,723
100%	Total Revenue	\$20,061,763

Combined Disbursements by Category

91.4%	Program Services	\$17,523,721
4.5%	Management & General Infrastructure	\$867,487
4.1%	Non-Program Personnel	\$784,193
100%	Total Disbursement	\$19,175,401

Notes:

Unaudited Figures

The Children's Trust 501c3 figures are reported on an accrual basis

Investment Gain / (Loss) remains designated to the endowment therefore it is not considered operating income

90% of all grant (restricted) revenue supports program services

Board of Directors

Chair

George Atanasov,
Director of State Government Affairs
Johnson & Johnson

Vice Chair

Anne Bailey Berman, Chairman of the Board
Chadwick Martin Bailey, Inc.

Treasurer

Samuel S. Mullin, Esq., Partner
Robinson + Cole

Samantha Aigner-Treworgy, Commissioner
Dept. of Early Education and Care

Edward N. Bailey, MD
Swampscott, MA

Nora Baston, Superintendent
Boston Police Department

Richard K. Bendetson, President & Founder
Diversified Funding Inc.

Monica Bharel, MD, MPH, Commissioner
Dept. of Public Health

Sidney L. Boorstein
Restaurant Consultant

David J. Breazzano, President & CIO
DDJ Capital Management, LLC

Betsy Busch, MD
Tufts University School of Medicine

Patrick Cahn *
Somerville, MA

Eileen Connors
Brookline, MA

Claudine A. Donikian, JD, MBA,
President & CEO
Pentera, Inc.

Roger Donoghue, Esq.
Murphy Donoghue Partners

Tara J. Esfahanian, Dir. of Major Gifts & Strategic Partnerships
Boston College High School

Richard Feilteau, CPA, Dir. Franchise Finance
Citizens Bank

Peter J. Forbes, Commissioner
Dept. of Youth Services

Jeffrey Grosser, Vice President/Partner
Rodman Insurance Agency, Inc.

Paul Guzzi
Newton, MA

Kate Haranis, External Communications Mgr.
Boston Scientific Corporation

Christine Hussey, Vice President of Mktg.
Gorton's

Ryan Hutchins, Senior Vice President (former Board Chair) *
Gilbane Building Company

Michael Kennealy, Secretary
Executive Office of Housing & Economic Dev.

Amy Kershaw, Commissioner
Dept. of Transitional Assistance

Hector Lopez-Camacho, Managing Dir.
State Street Corporation

Richard Lord
Peabody, MA

Anna Lucey, Lobbyist
Dempsey, Lucey & Associates

Kerry Maguire, DDS, Dir. ForsythKids
The Forsyth Institute

Anne Punzak Marcus, Co-Founder & CEO
Exceptional Lives

Jeff McCue, Commissioner *
Dept. of Transitional Assistance

Lisa McElaney, M.S. Infant and Early Childhood, Mental Health Counselor
JF & CS

Joan Mikula, Commissioner

Dept. of Mental Health

Maria Mossaides, Child Advocate

Office of the Child Advocate

Susan Loconto Penta, Managing Partner

MIDIOR Consulting

Jeff Riley, Commissioner

Dept. of Elementary & Secondary Education

Robert Sege, MD, PhD,

Tufts Medical School

Eric Solfisburg, Head of Investment

Product Consulting

MassMutual

Linda Spears, Commissioner

Dept. of Children & Families

Peg Sprague

Boston, MA

Marylou Sudders, Secretary

Executive Office of Health & Human Services

David E. Sullivan, District Attorney

Northwestern District Attorney's Office

Jane Tewksbury, Esq.

Arlington, MA

Thomas J. Tinlin, Institutional &

Private Markets Dir.

Howard Stein Hudson

Jay Weiner, PhD, Vice President of

Advanced Analytics

Chadwick Martin Bailey, Inc.

Tim Wilkerson, Vice President &

General Counsel

New England Cable & Telecom Association, Inc.

501(c)3 Children's Trust, Inc.

Board of Directors

Ryan Hutchins, President

Sidney L. Boorstein, Vice President

Sam Mullin, Treasurer

Paula Stahl, Clerk

Anne Gilligan

Kerry Maguire, DDS

Patrick Cahn

Designees

**Executive Office of Health and
Human Services**

Catherine B. G. Mick,

Undersecretary for Human Services

Dept. of Children and Families

Andrew Rome, General Counsel

Dept. of Early Education and Care

*Gail DeRiggi, Associate Commissioner for Family
and Community Supports*

Dept. of Elementary and Secondary Education

Anne Gilligan, Safe & Healthy Schools Coordinator

Dept. of Mental Health

*Emily Sherwood, Deputy Commissioner of
Children, Youth and Family Services*

Dept. of Public Health

*Jill Clark, Dir., Division of Child & Adolescent
Health & Reproductive Health*

Dept. of Transitional Assistance

*Tyreese Thomas, Assistant Dir., Employment
Services*

*Anne O'Sullivan, Assistant Commissioner **

// In these times of COVID-19 it has been hard being isolated with a baby. I look forward to the weekly visit for the human interaction and conversation - it has truly kept me sane in these crazy times. //

- Children's Trust program participant

Our Partners

The Children's Trust has deep long-standing partnerships with over one hundred of the most effective family support agencies and organizations across Massachusetts.

Healthy Families Massachusetts

Attleboro

Healthy Families Taunton/
Attleboro
Southeast Family Services

Boston

Boston Area Healthy Families
*Massachusetts Society for
the Prevention of Cruelty to
Children*

Brockton

Greater Brockton Healthy
Families
Southeast Family Services

Chelsea

Harbor Area Healthy Families
*Family & Children's Services of
Greater Lynn*

Fall River

Greater Fall River
Healthy Families Collaborative
People Incorporated, Inc.

Falmouth

Cape Cod Healthy Families
Early Childbearing Program
Health Imperatives, Inc.

Fitchburg

North Worcester County
Healthy Families
GVNA HealthCare, Inc.

Framingham/Milford

Healthy Families
Framingham/Milford
Criterion Child Enrichment, Inc.

Greenfield/Athol

Healthy Families Franklin
County
*Community Action! of Franklin,
Hampshire and North Quabbin
Region, Inc.*

Haverhill

Healthy Families Haverhill
Catholic Charities North

Holyoke

Healthy Families Holyoke
*Massachusetts Society for
the Prevention of Cruelty to
Children*

Lawrence

Healthy Families Lawrence
*Massachusetts Society for
the Prevention of Cruelty to
Children*

Lowell

Healthy Families Lowell
*Massachusetts Society for
the Prevention of Cruelty to
Children*

Lynn

Healthy Families North Shore
Catholic Charities North

Medford

Healthy Families Melrose/
Wakefield
Hallmark Health System, Inc.

New Bedford

Healthy Families New Bedford
Kennedy-Donovan Center

North Adams/Pittsfield

Healthy Families Berkshire
County
Child Care of the Berkshires, Inc.

Northampton

Healthy Families Hampshire
County
*Community Action! of Franklin,
Hampshire and North Quabbin
Region, Inc.*

Plymouth

Healthy Families Greater
Plymouth
Kennedy-Donovan Center

Southbridge

Healthy Families of Southern
Worcester County
*Worcester Community
Action Council*

Springfield

Healthy Families Greater
Springfield
Square One

Waltham

Healthy Families Central
Middlesex
*Jewish Family and Children's
Service*

Weymouth

Blue Hills Healthy Families
Health Imperatives, Inc.

Worcester

Healthy Families of
Greater Worcester
*Massachusetts Society for
the Prevention of Cruelty to
Children*

Parenting Education and Support Programs

Athol

The Nurturing Program for Parents and their Infants, Toddlers and Preschoolers
Valuing Our Children, Inc.

Attleboro

Project Connect Family Network, Parenting Toolbox
Attleboro Public Schools

Cambridge

The Parenting Journey Program
Cambridge Family and Children's Service

East Falmouth

The Effective Parenting Series
The Coalition for Children

Fall River

The Parenting Journey
People Incorporated, Inc.

Lowell

My Loving Parents
Catholic Charities/Merrimack Valley

Melrose

Creative Coping: New Mothers Group
Hallmark Health System, Inc.

North Adams

Parenting the Positive Discipline Way
Child Care of the Berkshires, Inc.

Quincy

The Parenting Journey Program
Boston Chinatown Neighborhood Center

South Boston

South Boston Neighborhood House Parents' Group
South Boston Neighborhood House

Turners Falls

Positive Parenting
The United Arc

Massachusetts Family Centers

Athol

Valuing Our Children Family Center
Valuing Our Children, Inc.

Cambridge

Center for Families
City of Cambridge Department of Human Service Programs

Greenfield

Greenfield Family Center
Community Action Pioneer Valley

Medford

Medford Family Network
Medford Public Schools

North Adams

Family Center of Northern Berkshire County
Child Care of the Berkshires, Inc.

Vineyard Haven

Martha's Vineyard Family Center
Martha's Vineyard Community Services, Inc.

SAFE Child Communities

Eastham

Name TBD
Cape Cod Children's Place

Fatherhood Initiative, Fathers & Family Network

Berkshire County

18 Degrees

Boston Metro Area

The Children's Trust

Central Massachusetts

Pernet Family Health Services

Greater Lawrence

Family Services of Merrimack Valley

South Coast Region

United Neighbors of Fall River

Southeastern Massachusetts

Cape Cod Children's Place

Western Massachusetts

Massachusetts Society for the Prevention of Cruelty to Children

Fatherhood Initiative, Nurturing Fathers Program

Dorchester

The Family Nurturing Center

Holyoke

Massachusetts Society for the Prevention of Cruelty to Children

Northampton

Hampshire County Sheriff's Office



Our Donors

This listing represents gifts received between July 1, 2019 and June 30, 2020.



Children's Hero \$50,000 plus

David J. Breazzano
Global Partners LP

Children's Legacy \$25,000 - \$50,000

Helen and Robert R. Alkon
Nordblom Family Foundation
Walmart Foundation

Children's Circle of Support \$15,000-\$24,999

Anne Bailey Berman and Roger Berman
Anne and Paul Marcus Family Foundation
Boynton John W. Fund
Bank of America, N.A.
Charles F. Bacon Trust,
Bank of America, N.A. Trust
Eileen and Jack Connors
Country Bank
Dr. Kerry Maguire

Children's Angel \$10,000 - \$14,999

Richard Bendetson
DDJ Capital Management, LLC

Direct iT, Inc.
Eastern Bank
Charitable Foundation
Eversource Energy
Foundation for MetroWest
Friends for Children
Tim Fulham and Lisa M. Olney
Gilbane Building Company
John G. and Jill Hayes
New England Development

Children's Guardian \$5,000 - \$9,999

AIS
Alkon & Levine, PC
Dr. Edward N. and Dena Bailey
Boston Celtics Shamrock Foundation
City of Boston Credit Union
Facebook Payments Inc.
Anonymous
Home Market Foods/Cooked Perfect
Hunt Street Fund
Christine and Bob Hussey
ITA Group Foundation
J. & M. Brown Company, Inc.
Massachusetts Port Authority
ML Strategies
PepsiCo Foundation
Corporate Advised Fund
Anne L. Peretz
PURE
Robinson + Cole
Rockland Trust Charitable Foundation

S&F Concrete Contractors, Inc
The MENTOR Network
Walter A. Furman Co.

Children's Champion **\$2,500 - \$4,999**

Arbella Insurance Foundation
Kelly M. and David A. Backes
Boston Children's Hospital
Century Bank
Colchester Partners LLC
Curry College
Wayne Davis
Frequency Therapeutics, Inc.
Game Creek Video
Gryphon Networks
Leerink Family Foundation
Leerink Partners Charitable Gift Fund
Thomas M. Martin, Jr. and
Dr. Sherry Graham
Jane Arnold and Samuel S.
Mullin, Esq.
Beverly Pazuk
Pentera, Inc.
Nicole and Michael Pytlak
Elizabeth Raponi
Rasky Partners
Sugrue & Associates, Inc.
The HYM Investment Group, LLC
Waldron H. Rand & Co., P.C.
Jay and Lynn Weiner
Dr. Ronald S. Weinger

Children's Advocate **\$1,000 - \$2,499**

Anonymous
George K. and Talin Atanasov
Suzin Bartley and Christopher
Navin
Patrice and Stephanie
Bergeron

Drs. Betsy Busch and John Szlyk
C. William Carey
Brandon Carlo and Mayson
Corbett
Jay M. Cashman
Cummings Properties, LLC
Speaker Robert A. DeLeo
Roger Donoghue, Esq.
An Duong
Edward J. and Helene Faneuil
Richard Feilteau and Anne
Dampousse-Feilteau
Stephen M. and Marie Flaherty
Leon Fortin, Jr
Geoffrey Gallo
Eric and Christine Gerstenberg
GNY Insurance Company
Dianne M. and John Goode
Paul H. and Joanne Guzzi
Kate and George Haranis
Joseph and Marianne Herlihy
Robert Hockett
Judith M. Holden
Ryan E. and Allison G. Hutchins
Sean Kane
Thomas P. and Irena Lavin
Margot LeStrange Stern and
Andrew R. Stern
Susan Loconto Penta and
Charles C. Penta
Richard C. Lord
Steven Fallon and Michelle
Martin Fallon
Mass Mutual Matching
Charles P. McAvoy, Jr.
Lisa McElaney and Abelardo
Morell, Jr.
John V. Miller
Kahlil A. Mitchell, Esq. and
Katie Mitchell
John Moore, Jr.

Natixis Global Asset
Management, L.P.,
Northeast Contractors Inc.
Pfizer, Inc.
Dr. Claudia & Mr. Charlton
Reynders, III
Barbara and Rob Rosiello
Drs. Robert D. Sege and
Karen Victor
Sheperd Kaplan Krochuk
R. Kevin and Susan Smith
Eric W. and Christina Solfisburg
Peg M. and Stephen O. Sprague
State Street Corporation
State Street Foundation
Matching Gift Program
Stop & Shop Supermarket Co.,
LLC
Swerling Milton Winnick Public
Insurance Adjusters
Jane E. Tewksbury, Esq. and
Daniel Albano
The Architectural Team
The Kurlat Financial
Nominee Trust
Jason Weissman
Tim Wilkerson

Children's Friend **\$100 - \$999**

Anonymous
Nick Alberti
Kirsten and Daniel Alderstad
Nancy L. and
Carole Allen-Scannell
Nelson and Patricia Amirault
Emily and Todd Anderson
Paul Andrews
Brian Babineau
Nora Baston
Mark and Anne Becker
Kathy Bell

Ward Bennett
Ellen Berman
Thomas Blackler
Dr. Rob Bogosian
Sidney L. Boorstein
Boston College High School
Boston Scientific Corporation
John Boudreau
Morgan Brady
Erica Brunner
Amy Laura Cahn, Esq.
Beverly A. Camerano
Janine Carreiro
Joseph C. and Rae M. Carter
Marie Cassidy and Sumner Jones
Rayna Charles
The Charles Realty
Lizabeth Ann Chockley
Alexander Chryssis
Chubb
Lisa and Chase Clark
Samuel C. Cohen
Barbara Collins
Francis L. Colpoys, Jr. and
Margaret D. Colpoys
Peter J. Condakes
Daniel J. Connelly
Casey Connelly
Susanna D. and Joseph C. Correia
Jack Corrigan
Julie Cox
Bo Creepey
Maura Curran
Nicole Curtin Driscoll
Mark P. and Joanne Czyrkliś
Matt Dallas
Diane Daly
David Sullivan Committee
Peter R. Defeo and
Dara L. Frigoletto

Brian Dempsey
Cecilia M. DiBella, Ed.D.
Tanji C. Donald
Margaret and James Driscoll
Joan Cole Duffell
Stefan Dunigan
Christopher Dunn, Esq. and
Jennifer Driscoll Dunn
Lynda DuRoss
Jesse Edward
Gaby Berman Elitov
Charles Enriquez
Tara J. and Eric Esfahanian
Michelle and Steve Fallon
Peter A. Fett, Sr. and
Monika R. Fett
Heidi Fischer
Nancy Fischer
Kathleen McGrath Fitts
Brenna M. Fitzgerald
Melissa Fitzgerald
Kirsten Funk
Kathy Gallagher
Karen L. Gardner and Tim
Souza
Meaghan Gay
Anne L. Gilligan, MPH
Robert P. and Donna Latson
Gittens
Shelly Glazier and James
Corkery
Barry Goldman
Elisabeth Goldman
Debbie and Rodrigo Gomes
Katherine Gormley
Kathy Gosnell
Janit Greenwood
Alma Lee Guttschall
Ken and Brenda Hamilton
William and Karen
Friedman-Hanna

Georgena Haranis
Josiah Hatch
Ryan Hatcher
Havas Media Boston
Elisabeth Jackson
Drs. Fran Jacobs and Barry
Dym
The Mirak Family
Conor Kells
Mike and Carolyn F. Kennedy
Paula King
Jessica Knezek
Martha E. Krache and
Bob Davis
Randolph S. and
Jessie A. Kravette
May Kwan
Ellen LaCourt
Monica Lagerquist
Erin Lambe
Alison Langevin
Ken and Deborah S. Lasden
Patricia A. Latimore
Brian Lavoie
Richard T. and Linda Lawler
Mary Kay Leonard and Dr.
Richard W. Valachovic
Linda Lerner
Jeffrey S. and Shawna K. Levine
Andrew S. Levine and
Michelle M. Goody
Nathaniel S. Levy
John A. Lippitt
Ida Lister
Anne Lucey and Brian Neeley
Eric and Karla MacDonald
Dennis Majeskie
Jim and Rose Maravelias
Frank Martin
Thomas and Mary Martin

Chris Martin
Mary Martin
Catherine Matthews
Jeffrey J. McCue, MPA
Paul McDermott
Dorothy McDermott
John and Catherine McDonnell
Robert A. McElaney
Michael and Sheila McGlynn
Adrienne McGrath
Jennifer L. McLarnon
Ann Merrifield
Middlesex Savings Bank
Raffi Miller
Jacquelyn Milller
Dolores L. and Marvin L.
Mitchell
Donald and Claire Moir
Samantha Morton
Janine Mudge
Suzanne Norman
Michael A. and Janet O'Brien
Francis Orlando
Mark O'Rourke
Lauren Padovan
Elizabeth and Adam Payne
Megan Peachey
Ryan M. Powers
Anagha Prasad
Kevin and Deborah Quinan
Jeevan Ramapriya
Licia Rando, M.Ed., M.S.W.
and Joseph Rando
Ann J. Reale
Anne Redmond
Regal Floor Covering, Inc.
John F. Reilly
Sarita Rogers and Derek
Kouyoumjian
Lucinda Ross

Jack Rowland
Maureen Rubino
Mandy Sadri
Jeffrey Sargis
Eric Savage
Savely Family Foundation
Christopher Schenck
Joan E. Schuman
Amanda Scola
Kenneth L. and Beverly A.
Sheiffer
Serge Shnyder
Stephen J. Silveira
Marc Sloat
Zachary A. Stanley and Jess
DiMartino
Janie Stanley
Sterling Fund & Fellowship
Foundation
Robert B. Straus, D.M.H., J.D.
Strawn Arnold & Associates
Thomas Sullivan
Ray Surprenant
Clyde and Jan Sylvia
Daniela Syzmczak
William J. and Ann Marie Teuber
Thomas J. and Kristin H. Tinlin
Stephen Tirella

Theodore J. and Jennifer Tomich
Rachel and Jeffrey Trant
Shereen Tyrrell
Drs. Robert Urban and Mary
Lynee Hedley
Kathleen Van Dam
Marissa Vargas
Jamie Kasabian Vraibel
Christine Waite
Michael Walker
Jeffrey and Maggie Warfield
Wells Fargo Fdn.
Ed.MatchGiftProgram
Patty A Whelan
Representative Susannah M.
Whipps
Cynthia H. Williams
Jodi A. Wolin
Daniel Zuniga



In Honor and Memorium

In Memory of Henry Dreher
Stephanie and Ira Krotick

In Memory of Barbara Krause
In Memory of Alexis Anderson
In Memory of Estate of Virginia M. Deady
Alkon & Levine

In Memory of Stephen Pazuk and Kathryn
Naficy Beverly Pazuk

In Memory of Gailanne Reeh
Cecilia M. DiBella

In Memory of Anne and John Bartley
Martha E. Krache and Bob Davis

In Memory of George Dee
Lizabeth Ann Chockley

In Memory of Laurie Joan Ruttenberg Fortin
Leon Fortin, Jr

In Memory of Leon Elitov
Nancy Fischer

In Memory of John Bicchieri
John Boudreau

In Memory of David Ramos
Jordan Novack
David Hughes
Suzanne Raposo-Ramos
Carl Dunham
Marcia Potter Picard
Carol Gasper-Knutson
Jessica Tripp
Dale Wilson
Mary Jane Spangenberg
Christina Thomas
Betsy Higginbotham Prince
Beth Sousa
Katie Sherrill
Stephen Medeiros
Rhonda Painter
Catherine McCord
Donna Traversi
David Rahmel

In Memory of Erin, Allison and Andrew Pascal
Emily Stieglitz-Shell

In Honor of Alysia Emerson
Beth-Ann Bove

In Honor of Amelie Payne
Kate and George Haranis

In Honor of Clark and Dean Haranis
Genevieve Wheeler
Diane Daly

In Honor of Clark Haranis
Anonymous
Cara Lousararian
Marika Haranis

In Honor of Dean Haranis
Tully Nicholas
Cara Lousararian
Debbie and Rodrigo Gomes
Nancy Wheeler
Georgena Haranis

In Honor of the Dollar Family
Kate and George Haranis

In Honor of Dr. Betsy Busch
Cummings Properties, LLC

In Honor of Elizabeth 'Betty' McElaney
Paul McDermott

In Honor of Finn Payne
Kate and George Haranis

In Honor of Jane Tewskbury
Suzin Bartley and Christopher Navin
Steve Woolfson and Lisa Rebello

In Honor of Dr. John J. Szlyk
Dr. Betsy Busch

In Honor of Kate Haranis
Genevieve Wheeler

In Honor of Lisa McElaney
Karen Moss

In Honor of Meleia Egger and Alex Rose
Barbara L. Cullman and Robert Packus

In Honor of Michael E. Tomsho
Andrea Tomsho-Dexter
Kathy Peterson

In Honor of Pedro Alves
Jade Ford

In Honor of Richard Bendetson
Jason Weissman

In Honor of Robin Boorstein
Dr. Ronald S. Weinger

In Honor of Samantha Girardin
Meaghan Gay

In Honor of Sidney Boorstein and Caryn Mofenson
Adrienne McGrath
Elliot and Nancy Keller Karlin

In Honor of Suzin Bartley
Dr. Edward N. and Dena Bailey
Lucinda Ross

In Honor of Tom Wilkerson
Kathleen Van Dam

In Honor of William Solfisburg
Eric W. and Christina Solfisburg

In-Kind Supporters

128 Coach
Aloft Boston Seaport District
Amber L Redmond
American Repertory Theater
Anne Bailey Berman
Anne Punzak Marcus
Avenue N
Avon Cinema
Backyard Betty's
Beryllium Pictures
Bodhi Spa
Bolt Coffee Company
Boston Celtics Shamrock Foundation
Boston Marriott Copley Place
Claudine A. Donikian, JD, MBA
Columbus Hospitality Group
David J. Breazzano

Foodie's Market
Formaggio Kitchen South End
Google AdWords
Greenvale Vineyards
Henrietta's Table
Henry Bear's Park
Huntington Theatre Company
International Tennis Hall of Fame
Jade Ford
Jay Weiner
JetBlue Airways Corporation
Knead Doughnuts
Mary V. Fitzgerald
Mass Audubon
Michelle Fallon
New England Aquarium
Payrolls Unlimited, Inc.
Pentera, Inc.
Publico Street Bistro & Garden
Robert R. Alkon
Robinson + Cole
Roche Bros.
Roger Williams Park Zoo
Saunders Hotel Group
Shoes.com
Sidney L. Boorstein
Southwest Airlines
Springfield Museums
Swan Boats, Inc.
The Aquitaine Group
The Boston Bruins Foundation
The Discovery Museums
The Institute of Contemporary Art
The Trustees of Reservations
Total Wine & More
Tower Hill Botanic Garden
WCVB-TV Channel 5
White Orchid Media
XV Beacon Hotel





children's
trust[™]

55 Court Street, 4th Floor
Boston, MA 02108
childrenstrustma.org

@trust4kids

